



CALCBENCH

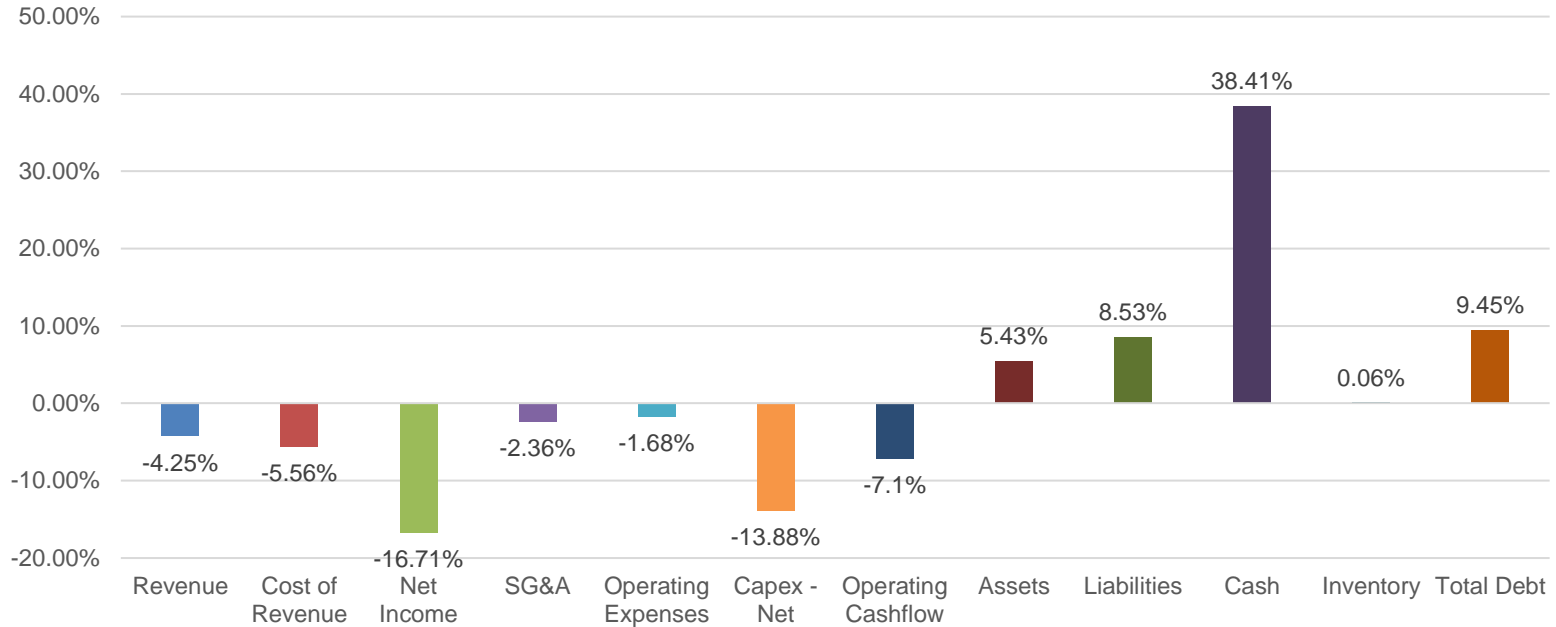
Quarterly Wrapup 4Q 2020

March 2021

YoY

- 2136 non financial firms aggregated
- Compared 4Q 2020 reported metrics versus 4Q 2019
- Excluded financials and most retailers

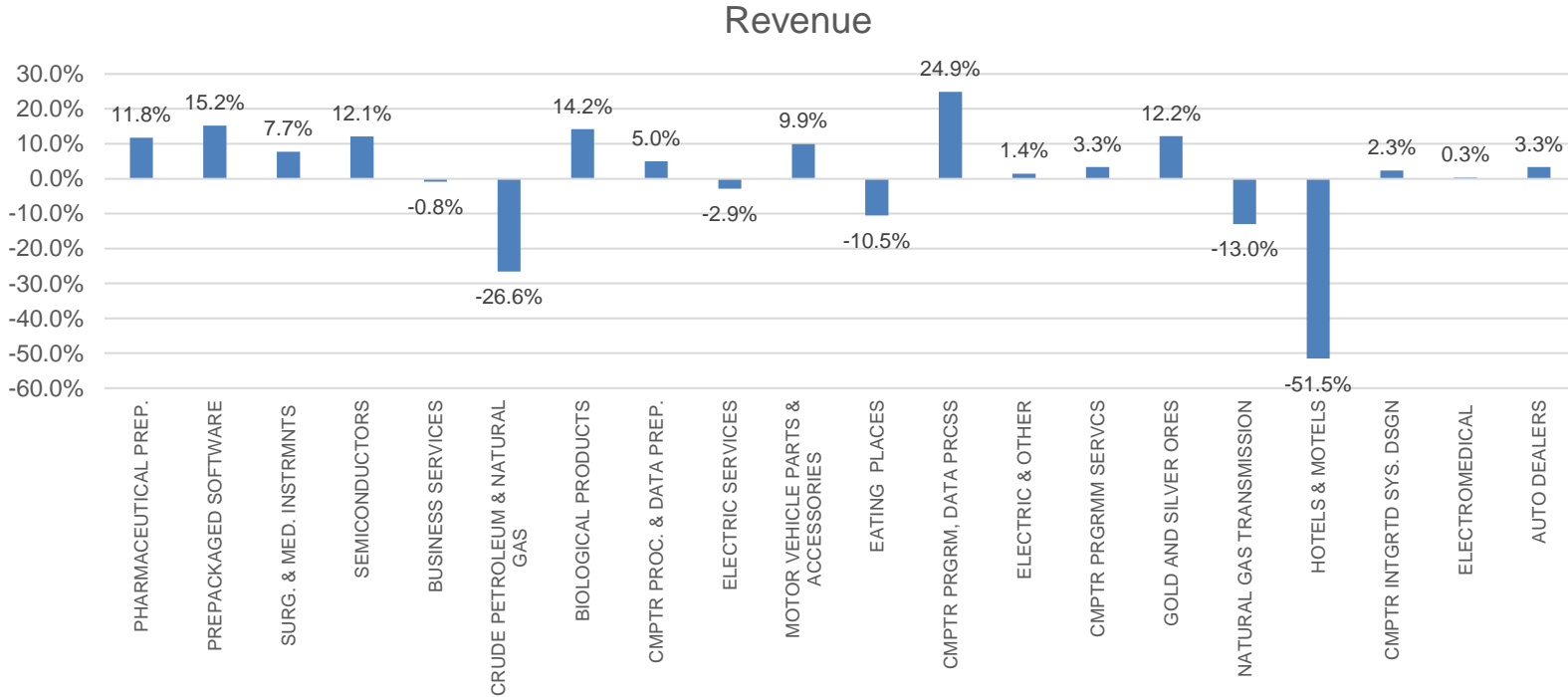
Year-over Year Delta, by Category



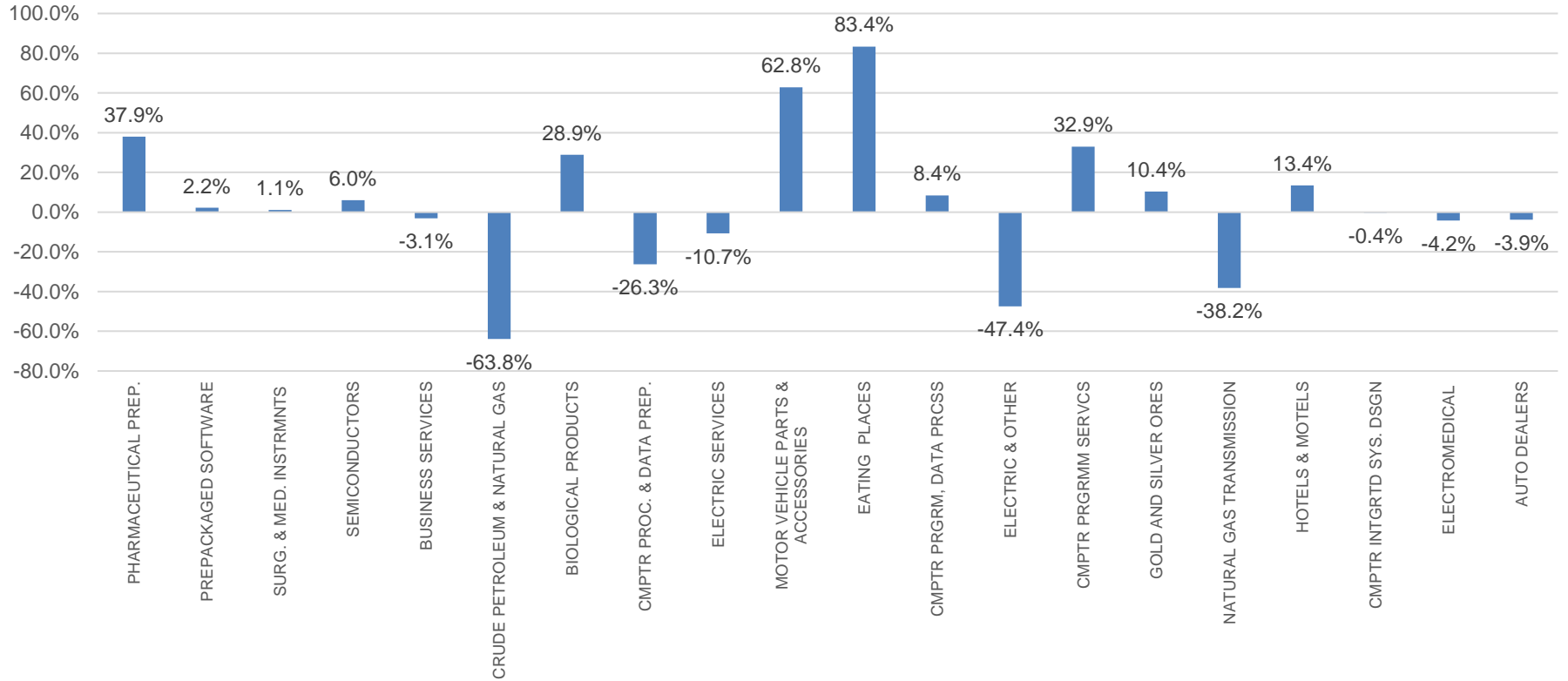
By 4 digit SIC

- Took the top 20 SIC groups by population representing about 40% of the sample (~860 firms)
- Compared 7 metrics
 - Revenue
 - Operating Expense
 - SG&A
 - Net Income
 - Cash
 - Capex
 - Cashflow from Operations

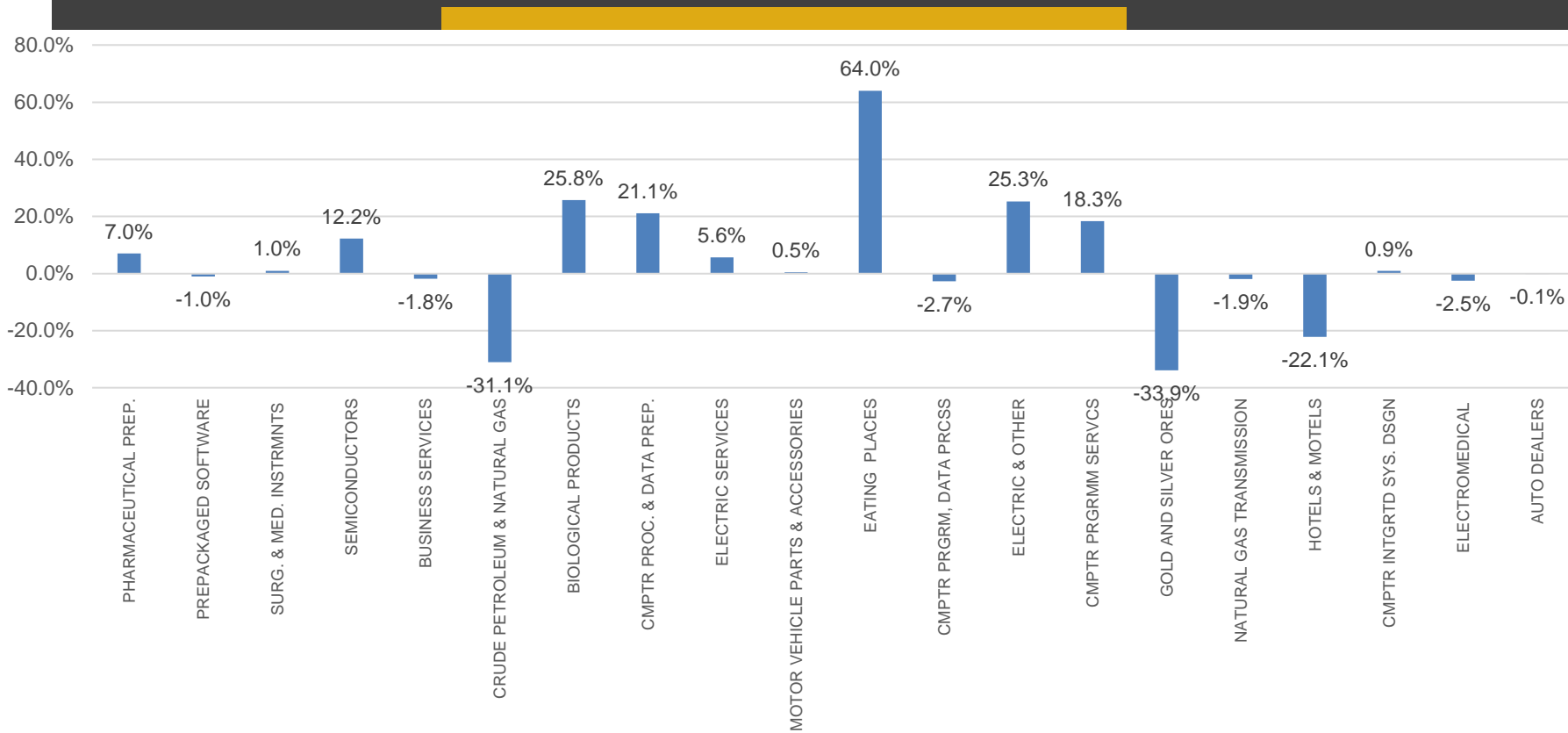
Revenue



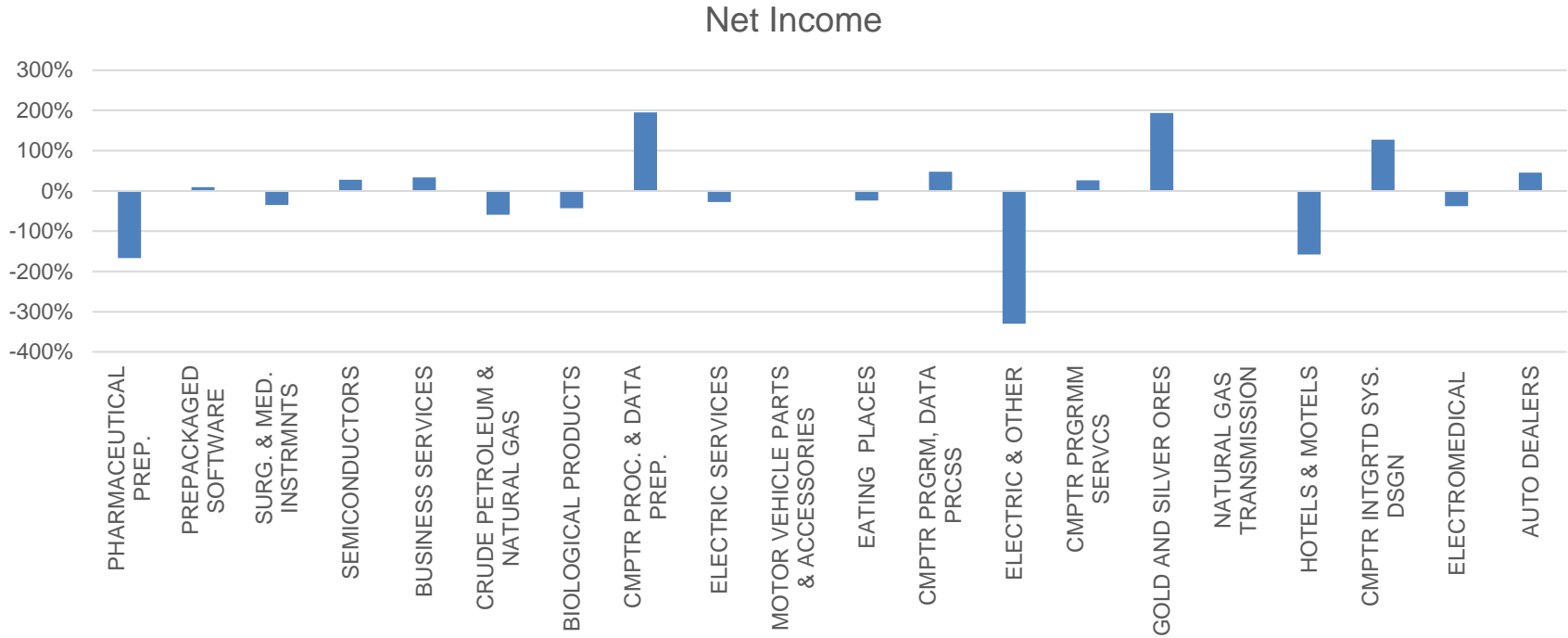
Operating Expense



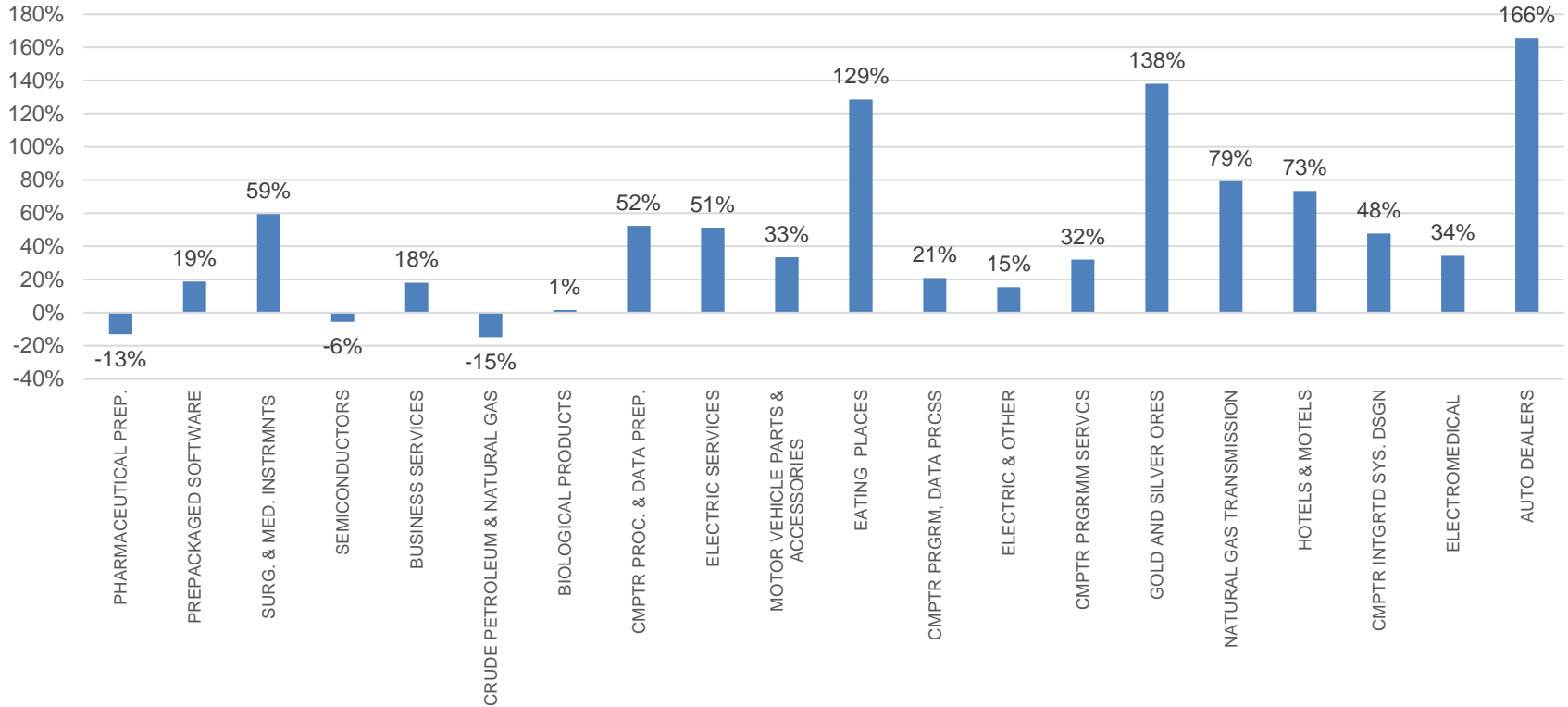
SG&A



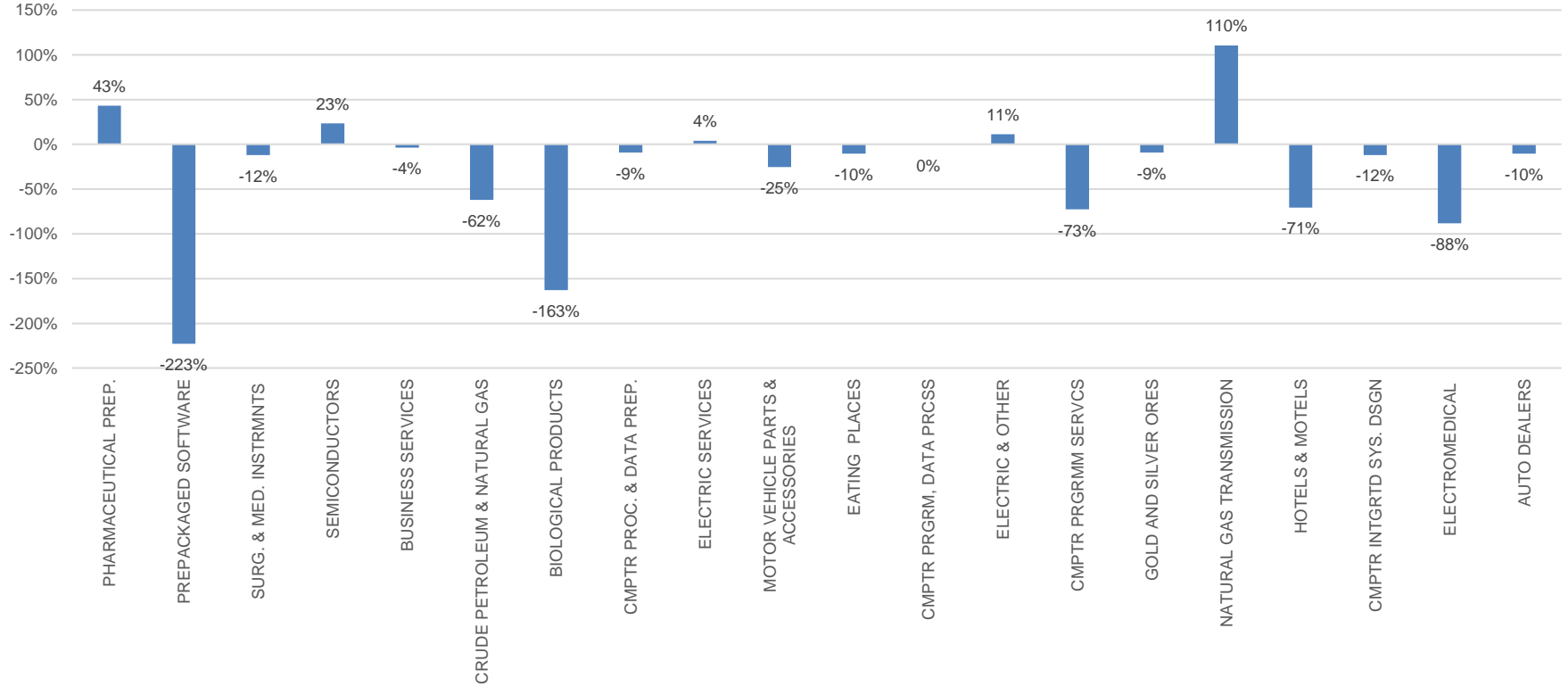
Net Income



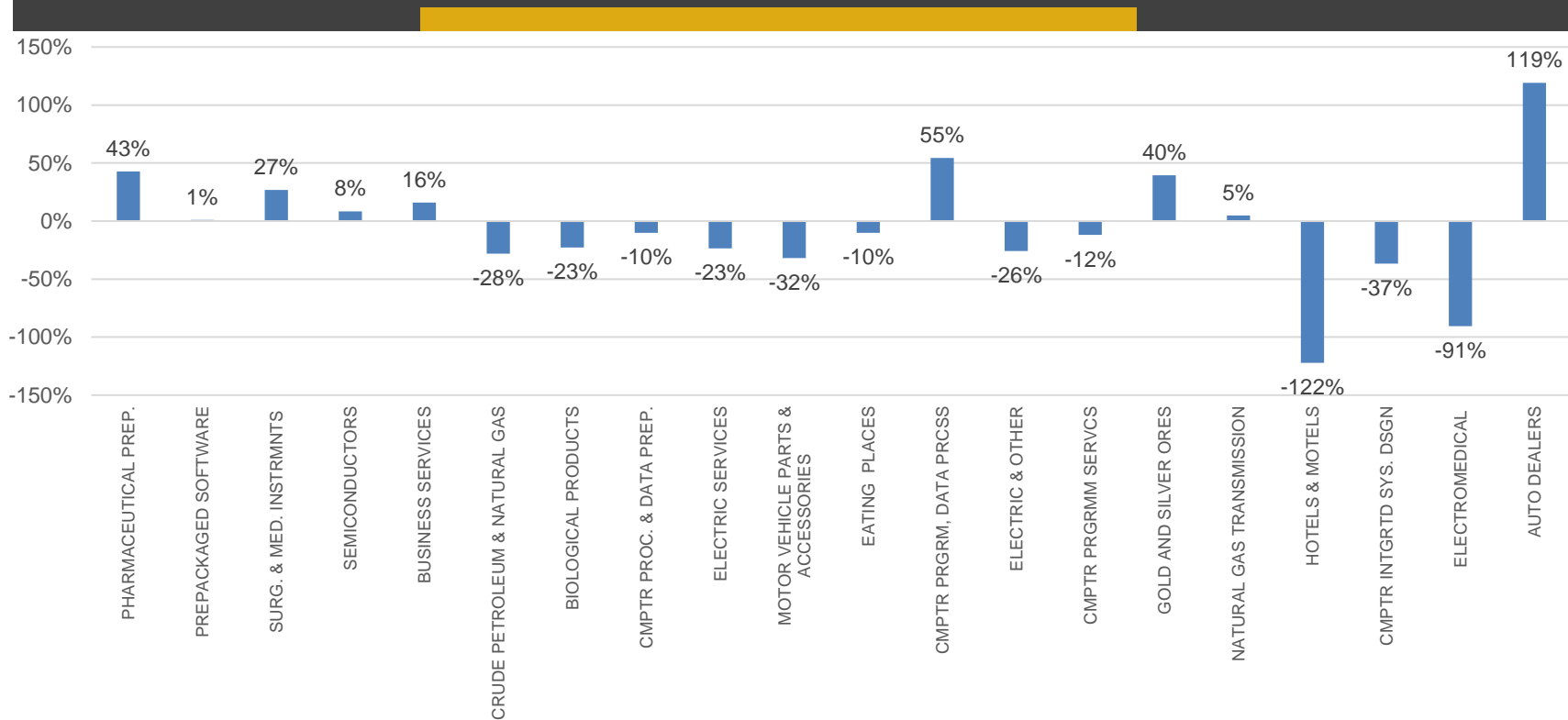
Cash



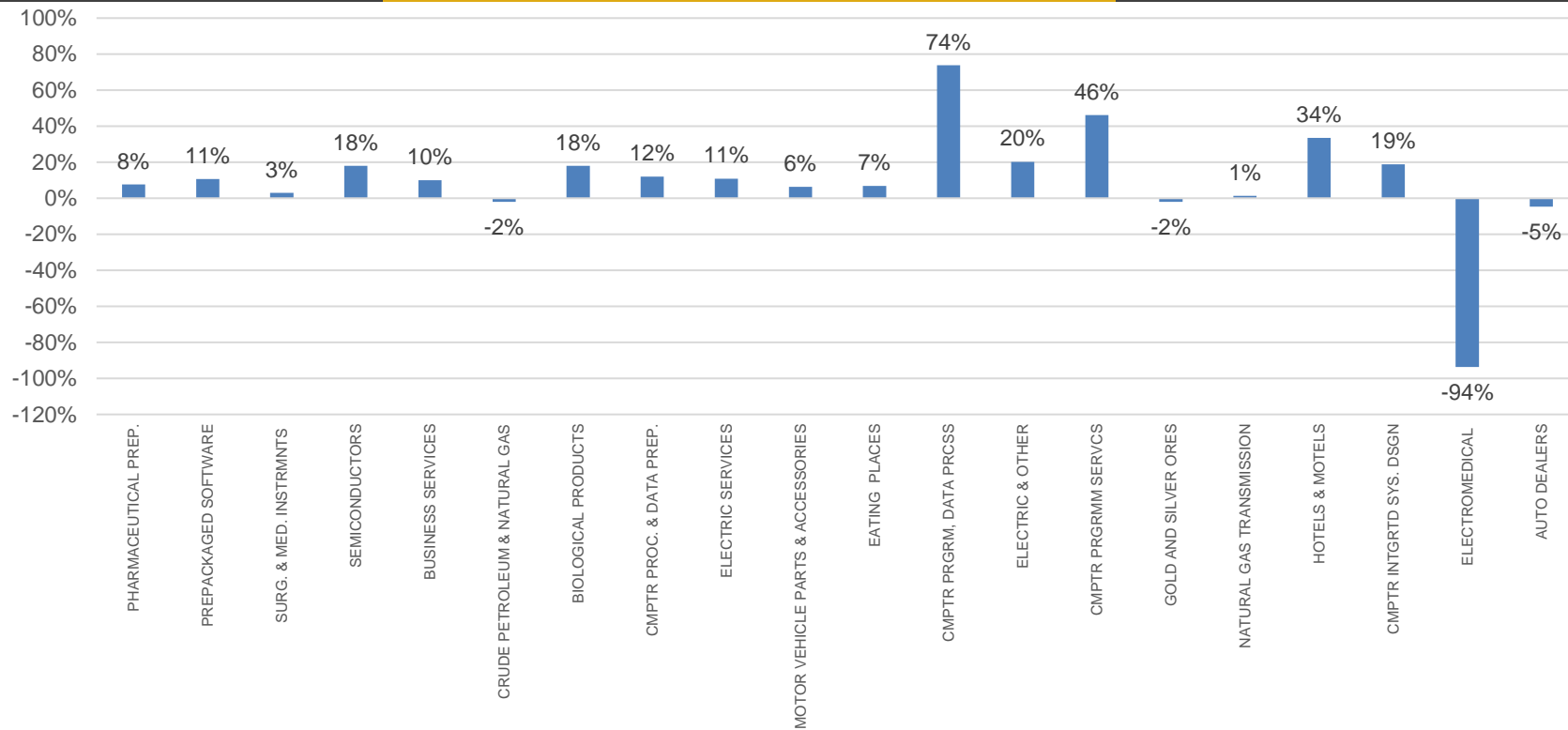
Capex



Cashflow from Operations



Total Debt





Thank you, that's all!



us@calcbench.com



[@calcbench](https://twitter.com/calcbench)